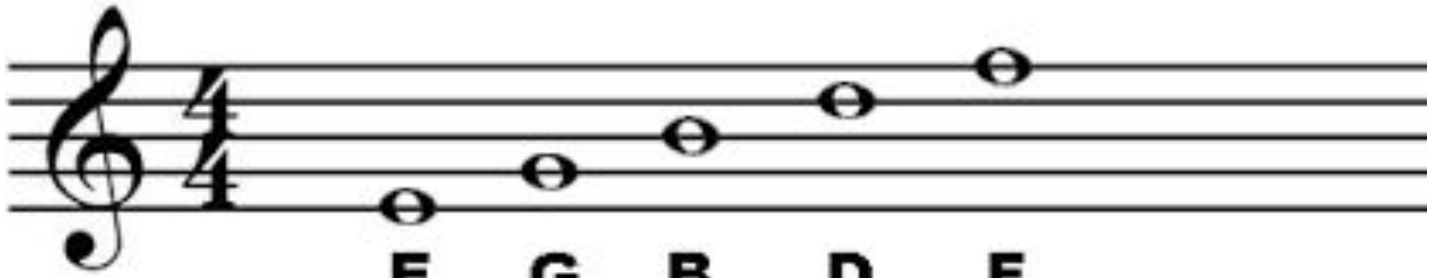


Name \_\_\_\_\_

Class \_\_\_\_\_

# Treble Clef Lines



**E G B D F**

**Every Good Boy Does Fine**

Create your own sentence!

E \_\_\_\_\_ G \_\_\_\_\_ B \_\_\_\_\_ D \_\_\_\_\_ F \_\_\_\_\_

A large, empty rounded rectangular box for writing a sentence using the letters E, G, B, D, and F.